

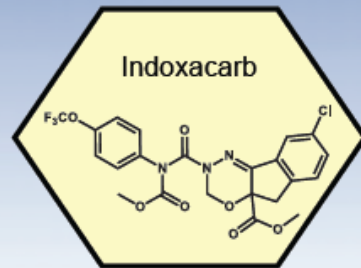
## Mode of Action Data Sheets

### ***Group 22 Voltage-dependent sodium channel blockers***

Block sodium channels, causing nervous system shutdown and paralysis.

Sodium channels are involved in the propagation of action potentials along nerve axons.

### **Group 22: Voltage-dependent sodium channel blockers**



22A Indoxacarb



22B Metaflumizone